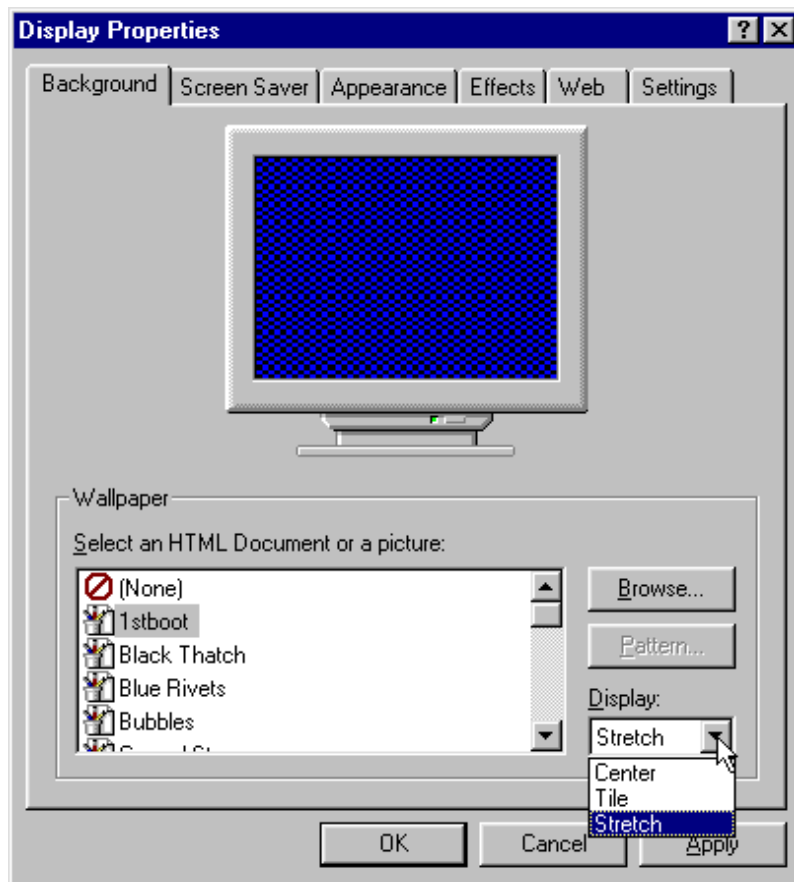


## For Your Viewing Pleasure



Note: Your screen and options might be different depending on the installed graphics card or if you have Windows 95 or 98.

To access the desktop and display options, Right-click on desktop and select properties.

Wallpaper describes the background image which may be showing on your desktop.

C:\WINDOWS folder holds several default BMP's or Bit Mapped Graphics. These documents are shown in the 'Wallpaper' section under the Background tab.

To preview a listed item click on the name.

Several of the graphics are quite small. To make them 'spread' over the entire screen, select 'Tile' from the Display: drop down list. Win98 adds the "stretch" option.

You are not limited to the graphics shown in the list. Several other types of graphic pictures may be hiding on your computer. They have extensions of .GIF, .JPG, and .BMP.

Browse... can be used to find other 'Background Files'. The chapter 'Finding Files' will help you locate other graphic files.

Patterns... are another way to customize your wallpaper.

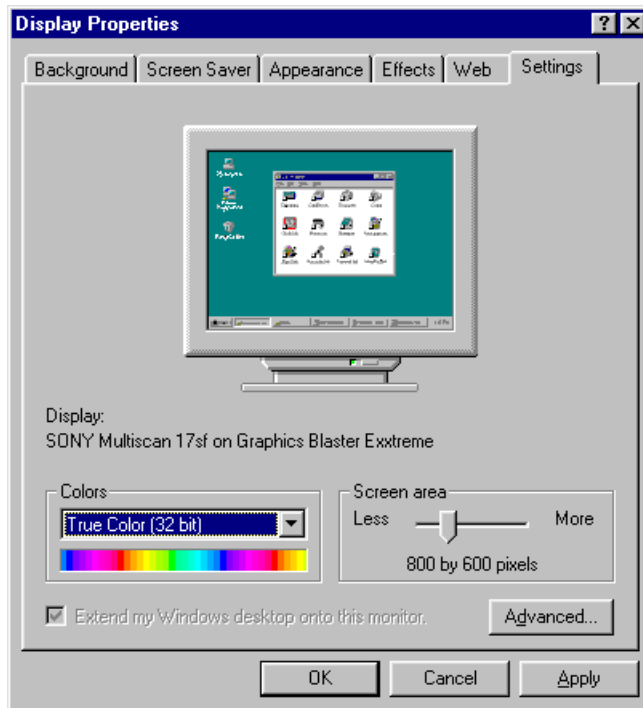


Various parts of the window can be changed. The individual parts of the window can be accessed by making a selection from the *Items:* drop down list or clicking on a window part in the display box. As you click on a portion of the display, the corresponding window part will show in the *Items:* text box.

Various properties such as text size, color and spacing can be changed.

If you make changes in this area, take time to write down the starting values. It may be the only way you can return your computers display to a usable condition.

This area can be very useful if you have disabled users. You can widen scroll bars, increase text size and customize colors.



**\*\*\*Warning\*\*\***

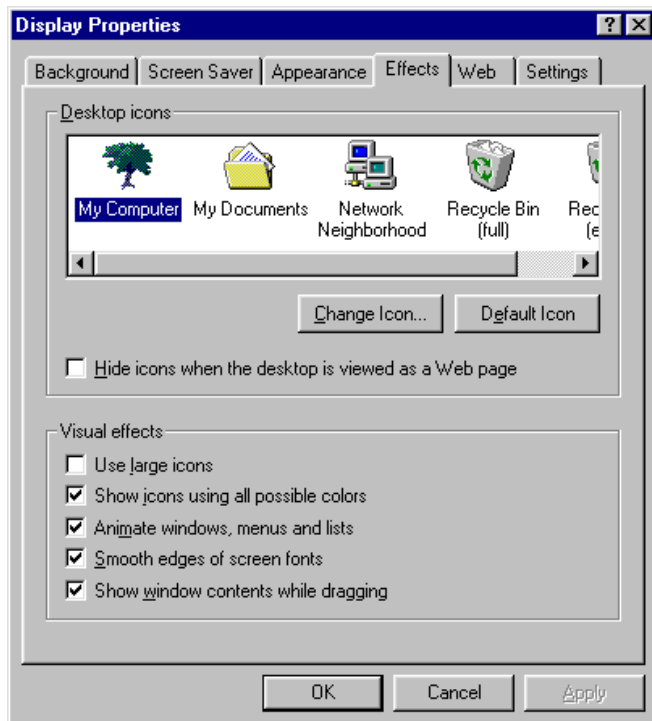
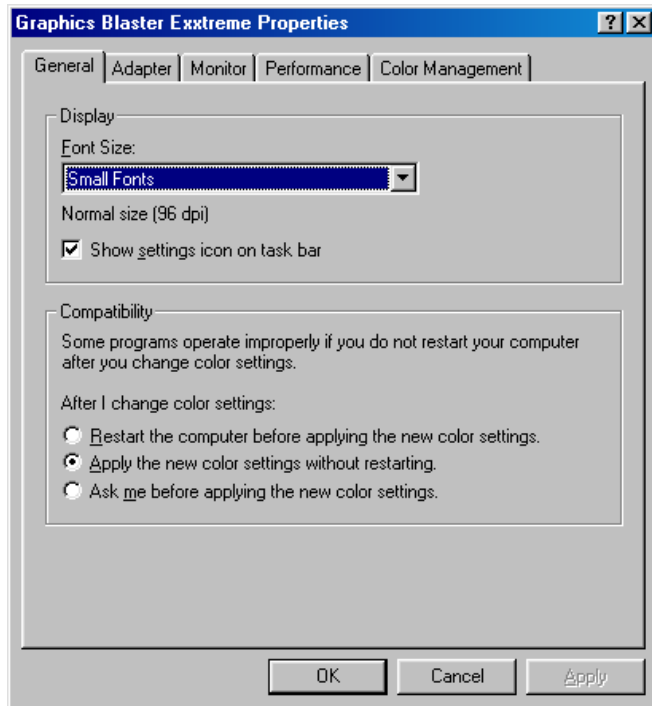
Changing settings on this screen may stop your computer from displaying properly. If you have an old monitor or video card with limited RAM, your computer might not be able to handle changes in resolution or color.

**Settings tab.** If your colors look a little blotchy, you might have to increase the limit of colors displayed. The lowest level is 16 colors. Many programs require a minimum of 256 colors. The Colors drop down list allows you to select the colors displayed.

Screen Area - settings for 17" monitors are normally 800 x 600. Smaller monitors should use 640 x 480 pixels.

The Advanced . . . button (shown on the next page) has several useful features.

The Apply new settings without restarting allows you to test the new settings to see if they are compatible before you shut down and find you can't restart.



Your desktop icons can be customized to suit your mood.

Location of default icons  
C:\Windows\System\Shell32.dll